

# Type A and Type B (Exd) stopping plugs - PAD / PBD Series



Type PBD

Type PAD

## Features

- International Ex approvals
- IP64 CSA Enclosure Type (NEMA) 3
- Available in brass, stainless steel, mild steel and aluminium
- Various threadforms available

## Benefits

- Provides method of filling unused entries in equipment
- Type B secures from inside, providing extra security
- Maintains Ex certification
- Maintains IP integrity

## Materials

- Brass CZ121
- 316 stainless steel
- Aluminium
- Mild steel

## Threadforms

- Metric
- NPT
- NPSM
- PG
- ISO pipe (BSP)
- ET

## Plating options

- Electroless nickel
- Zinc
- Others on application

## Technical specification

### Code of protection categories

ATEX: II 2GD, Ex d IIC Gb, Ex tb IIIC Db IP6X

IECEX: Ex d IIC Gb, Ex tb IIIC Db IP6X

CSA: Ex d IIC IP54, Class 1, Division 1&2; Groups A,B,C&D; Class II, Groups E,F&G; Class III; Enclosure Type 3

GOST: ExdIIICU

### Compliance standards

ATEX: EN 60079-0, EN 60079-1, EN 60079-31

IECEX: IEC 60079-0, IEC 60079-1, IEC 60079-31

CSA: C22.2 No.30-M1986 (R2012), CAN/CSA 60079-0-11, CAN/CSA 60079-1-11, CAN/CSA 60079-31:12, UL 1203-5th Edition

### Certificate details

ATEX: Sira 99ATEX1113X

IECEX: IECEX SIR 12.0016X

GOST: TR RU C-GB.GB06.B.00106

CSA: 1248014 (LR 106084)

### Temperature

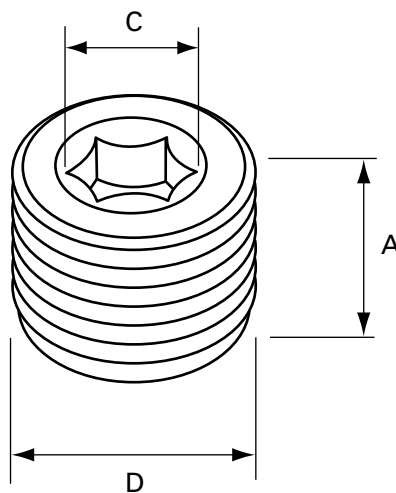
Temperature range: -50°C to +180°C

### Ingress protection (IP):

Independently tested to IP66 / IP68 when fitted in accordance to manufacturer's instructions

### Part number:

Please refer to page 10 for part numbering system



## Dimensions of metric versions

Size	Overall length (A)	Hex recess (C)	Diameter (D)
M16	17.90	8.00	16.30
M20	17.70	10.00	20.30
M25	17.70	10.00	25.30
M32	17.60	10.00	32.30
M40	16.80	10.00	40.20
M50	17.50	10.00	50.20
M63	17.30	14.00	63.10
M75	17.30	14.00	75.00